

CLUB FERMOY

The David Roche Foundation House Museum Newsletter

Issue 48



Image: A gilt brass 'Wreath for All Seasons' purchased by David Roche in the United States in the 1980s and displayed each year at Christmas. See this through December in the Roman Room, Fermoy House!

From the Museum Director

Dear friends and supporters,

Dear

Welcome to our Christmas summer edition of Club Fermoy covering December and January at TDRF. *Wedgwood: Master Potter to the Universe* has been inspiring audiences and critics alike with its stunning array of work from the 1760s to 2023. Get out of the heat this summer and enjoy the cool environment and stimulating works of art in the exhibition galleries and Fermoy House. It's not quite snowing inside but you'll definitely feel like you're in Europe with David Roche's collection. In addition, his tree, decorations, and wreath now adorn the Roman Room for the month of December.

This Thursday join us at TDRF for our last Twilight evening event where you can enjoy the gardens while sipping a wine or listen to our curator present bite sized talks in the Wedgwood exhibition. This issue of Club Fermoy is packed with interesting stories about works in the collection and includes a piece from Dr Robert Harland, our current SIDA Foundation, UniSA and TDRF Research fellow in interior design and decoration. Remember that our shop has a range of Christmas items, many unique to the museum, or you can buy the gift of Membership online and share your love of TDRF with others!

Finally, a massive thanks to 'you', our dedicated supporters and ambassadors who tell everyone about David Roche's remarkable collection and wonderful exhibitions. From the Trustee Directors and team at TDRF please enjoy a safe and happy festive season and we look forward to sharing our exciting programme with you in 2024.

Best wishes,

Robert Reason

BEAT THE CROWDS

WEDGWOOD

Master Potter to the Universe



We enter the final weeks of *Wedgwood: Master Potter to the Universe* in January, so stay ahead of the crowds and make your visit in December. Guided Tours are led each Thursday at 11.30am, and our Twilight Evening for the exhibition is this Thursday, 7 December.

240 ceramics from the 1760s to 2023 highlight Wedgwood's diversity and innovative excellence. See historically celebrated pieces from the Frog Service, created for Catherine the Great, Empress of Russia; the Portland Vase, based on the ancient Roman original in the British Museum; and the Sydney Cove Medallions, made from Australian clay in 1789. Lovers of mid-century and modern design will relish the work of Keith Murray, Norman Wilson, and Australian studio potters Michael Dillon and John Dermer. From familiar white on blue jasper to the glittering colours of Fairyland Lustre, this exhibition promises to surprise, enchant, and delight.

This Adelaide-exclusive exhibition is the first Australian survey of Wedgwood in nearly 30 years. Explore 265 years of history, experience iconic works of art, and be prepared for the the unexpected.

Until 27 January 2024
Tuesday to Saturday
10AM – 4PM

\$12 Adult. \$10 Concession.
\$9 TDRF Member.
Children under 12 free.

[Purchase your ticket online](#)
Tickets also available at the door

Guided Tours
Thursdays 11.30AM
[Book your tour here](#)

THIS WEEK!



TWILIGHT EVENING: WEDGWOOD

Thursday 7 December 5.00–7.30pm

Our popular Twilight Evening returns this Thursday! We will open until 7.30pm for you to explore *Wedgwood: Master Potter to the Universe* and enjoy the early evening light with refreshments in the forecourt. Curator Timothy Roberts will present short talks, and the TDRF Shop will be open for all your last minute Christmas gift needs!

Thursday 7 December 2023 | 5.00-7.30PM

Admission: \$20 | Reserve your ticket online and pay now or at the door!

Ticket includes beverage on arrival and entry to *Wedgwood: Master Potter to the Universe*. Last entry tickets sold 7.00pm; additional beverages may be purchased until 7.15pm. No access to Fermoy House.

[Book now](#)

NEW ACQUISITION



The David Roche Foundation is most grateful to receive a needlework rug created in the late Victorian period. This work has been generously donated by TDRF Member and Volunteer, Dr Leslie Stephan.

This large format needlework rug is an example of Berlin Work, a type of canvas work which emerged in Berlin during the early nineteenth century. The development of brightly dyed merino wools and printed charts offering a seemingly limitless array of designs saw this art form surge in popularity among the middle and upper classes throughout the nineteenth century. Berlin Work design charts varied in

complexity, ranging from simple patterns requiring only one or two dozen coloured wools, to detailed scenes employing seventy or eighty different coloured wools.

While this rug employs about 20 coloured wools to effect the design, the central portrait of a dog on a grassy knoll is remarkable both in its size, realism, and detail. The work is the creation of an unidentified needleworker and was formerly held in a private collection in Salisbury, United Kingdom. It is hoped that further research may reveal the source of the central and corner designs.

David Roche collected examples of historic needlework as both soft furnishings and framed works of art. Many of these works depict animals, especially dogs, and were displayed throughout Fermoy House. Due to their usage many needlepoint rugs have not survived or are in poor condition, and a work of this larger format was not held in the collection. The donation of this floor-rug enriches the collection's breadth of needlepoint and canine art.

The David Roche Foundation thanks Dr Stephan for his generosity. If you are interested in furthering David Roche's vision through the donation of works of art or making a financial contribution to the museum, please contact Museum Director Robert Reason for a confidential discussion.

CANINE TIDBITS



Image: attributed to Jean-Jacques Bachelier (France, 1742-1806), *Portrait of a dog (possibly a Löwchen)* c. 1790, oil on canvas. TDRF 1371.

Hanging above the doorway in David Roche's bedroom is a portrait of a much-loved bitch. Elegantly trimmed and dressed with a pink ribbon, it is thought she was painted by Jean-Jacques Bachelier, a French artist, teacher and Director of the Sèvres Porcelain Manufactory.

Most interesting about this portrait is the style in which the bitch's fur has been trimmed. Known as a 'lion cut', the style shaves the haunches, back and front legs and about one third of the tail closest to the body, effecting a lion's mane. While the cut is today best associated with the Löwchen breed, it was a particularly popular style to dress toy dogs in eighteenth-century France. The styling can be seen in Bachelier's portrait of a *Dog of the Havana Breed*, displayed at the Bowes Museum, Newgate, United Kingdom, and Jacques Barthélémy Delamarre's portraits of Marie Antoinette's poodle.

In the eighteenth century, having your pet's portrait painted or sculpted was no different than taking a photograph today - it was an indication of their very deserving place as a loved member of the family.

TODAY'S TREASURE

Showcasing the favourite pieces of our volunteers in The David Roche Collection. In this edition, Ian S looks at two pairs of handsome obelisks.



Image: Unknown lapidarists, *Obelisks*, Lapis Lazuli and ormolu mounts (outer); Sodalite and black marble (inner). TDRF 2678, 1432.

Visitors to Fermoy House will notice that David Roche collected many obelisks in a great variety of semi-precious stones. Obelisks date back to ancient civilisations; the Egyptians originally displayed obelisks in pairs at the entrance to temples. It was said that obelisks represented eternity and immortality; their tapering form symbolised a connection between the heavens and earth.

Two pairs of blue obelisks are displayed in the Russian Room. Despite their similar appearance, the obelisks feature two different stones. One pair of obelisks is laminated in Lapis Lazuli, while the other pair is laminated in Sodalite.

David Roche acquired the Lapis Lazuli obelisks in London in 2007. They were formerly in the collection of renowned opera singer Maria Callas. They are mounted on gilded neoclassical feet and are enhanced by applied gilded masks, of what appears to be a Roman Emperor, possibly Lucius Verus. The obelisks were made in the 1920s during the Egyptomania craze that emerged after the discovery of Tutankhamun's tomb - the largest and most complete burial hoard ever discovered in Egypt.

The intense blue colour of Lapis has attracted artists for millenia. The Egyptians ground down the stone for cosmetics, and artists during the Renaissance used lapis to make Ultramarine pigment. The golden flecks that enchant the eye are inclusions of silvery gold pyrite.

The nineteenth century Sodalite obelisks are equally impressive. A similarly rich blue to Lapis, Sodalite lacks the glittering pyrite inclusions and has a somewhat mottled appearance, characterised by white patches and black veins.

To see these obelisks and many other treasures in stone, book a tour of Fermoy house today!

[Book now](#)

RESEARCH FELLOWSHIP



Image: UniSA, SIDA Foundation and TDRF Research Fellow Dr Robert Harland and TDRF Museum Director Robert Reason in the Dressing Room, Fermoy House.

In November, The David Roche Foundation welcomed Dr Robert Harland from Loughborough University in the United Kingdom as part of a Research Fellowship in collaboration with UniSA Creative at the University of South Australia.

Robert's research examines the role of graphic heritage by exploring the means, meanings, and measures through which people experience and are informed about heritage in graphic form. Graphic heritage is indiscriminating in its levelling of high and popular cultural heritage. As such, it provides a unique perspective on the public and private passions of artefacts on display at the TDRF Museum.

Central to the idea of graphic heritage is the notion of design literacy, a competency that places high value on aesthetics, culture, and materiality. Design literacy is an ability possessed by both professionals and non-professionals alike. Although not trained in design, David Roche displayed exceptional levels of design literacy throughout his life, manifested in the magnificent interiors and decorative arts on public display in the museum. But what about his other consuming passion; the Fermoy Kennels and his love of dogs? Paintings of dogs and photographs of his exploits are a testament to his life as the most successful dog exhibitor in Australia. Evidence of this is vividly depicted through the ribbons and trophies also on display. These decorative design devices are as much a representation of him as the decorative arts he collected throughout his life.

For the duration of the Fellowship throughout 2024, Robert will explore ways to shine the light of graphic heritage on these consuming passions, from relics after Roman antiquity to the ribbons and rosettes.

Dr Robert Harland



MEMBERSHIP



Are you a regular visitor to The David Roche Foundation House Museum? Even if you're not but are keen to support the work of the Foundation, then becoming a TDRF Member would be the ideal thing for you!

TDRF Members enable the Foundation to maintain David Roche's exquisite collection, present world-class exhibitions, program lectures with expert guest speakers and to fulfil its vision as a centre of excellence and a leader in decorative arts in Australia. By becoming a TDRF Member, you will meet like-minded enthusiasts who share your passion for art and history, and receive many great benefits including:

- 25% discount off full price house tour ticket (4 times per year)
- 25% discount off full price exhibition entry fee
- 10% discount off full price purchases in the shop (this excludes online shop)
- 10% discount off full price TDRF Lecture Series tickets
- Invitations to exclusive tours and special events
- Advance notice of TDRF programs and events
- Members only events & trips

Become a TDRF Member

You can now join the membership online by visiting www.rochefoundation.com.au/membership/ Alternatively, please call into the museum or download the membership application form [here](#).

Please return your completed form by post or by dropping it off at the museum.

For further information please e-mail memberships@rochefoundation.org.au or phone 08 8267 3677.

[Find out more](#)

GIFT SHOP
CHRISTMAS IS COMING!



Our new greetings card celebrates Christmas, featuring David Roche's gilt brass *Wreath for All Seasons*.

\$15 per pack of 5

Buy Now



Know someone who has everything? TDRF Gift Cards can be redeemed in-store to purchase tickets and gifts!

Available in \$20, \$30, \$50, and \$100

Buy Now



Buy three packs of greetings cards and save! Choose from *Icon*, *Wreath*, or *Madonna and Child*.

\$40 (separately \$45)

Buy Now



One for you and one for a loved one! Our mug designs feature *Flowers* or *Fruit*.

2 mugs: \$35 (separately \$40)

4 mugs: \$60 (separately \$80)

Buy Now



FOR THE AVID READER

Empires and Splendour: At Home with David Roche is the definitive guide to the finest works of art collected by David Roche. This 300-page, resplendently illustrated hardcover volume is an essential investment for every person

IN STORE ONLY

Wedgwood Christmas ornaments inspired by iconic blue and white Jasperware.

Each ornament is presented in a Wedgwood blue box. Designs include *Present* (sold out!), *Snowman* (right), *Tree*, *Angel*, *Snowflake*, *Robin*, *Teapot*, *Stag*

who admires beautiful things.
\$70 (original price \$90)

Cameo, Deer Bauble, Nativity Bauble
\$100 each

Buy Now

Order online at <https://www.rochefoundation.com.au/shop/> or by calling us on **(08) 8267 3677** or emailing us at info@rochefoundation.org.au (with your contact details). Click and collect is available.

We now post internationally!

Visit the shop

EVENTS AT A HOUSE NEAR YOU

Our friends at Carrick Hill and The Cedars offer wonderful experiences and events. Here's what's on:

CARRICK HILL

FUSE Glass Artist Residency

Marcel Hoogstad Hay: Sublime Scales

On display until 28 January 2024

The FUSE Glass Artist Residency, valued at over \$20,000, is awarded biennially to mid-career glass artists, and provides a 4-week opportunity to work with hot blown glass at JamFactory's Glass Studio in Adelaide.



Marcel Hoogstad Hay, a South Australian-based artist educated at ANU School of Art & Design, presents *Sublime Scales*, an exhibition of new works exploring perceptions of space, time and matter.

Exhibition entry is included with house admission: Adult \$17 | Concession \$13

[FIND OUT MORE](#)

Image: Marcel Hoogstad Hay, *Trace/Traverse*, 2023, Image: Pippy Day.

THE CEDARS

We're open during summer!

A 1-hour guided tour of the Heysen Home & Hans Heysen's Studio is a wonderful way to spend a Summer's day. Listen to our knowledgeable guides as they share the fascinating stories that the Cedars has to share, and see some 200 works of art during your visit.

Every Guided Tour ticket includes access to Nora Heysen's studio, the Artist's Walk, the Artist's Garden & the historic coach house. Our current exhibition in Nora Heysen's studio is *Bloom*.

While you visit, why not enjoy tea or coffee in the Cedars Café & Tea Rooms? You can pre-book a Devonshire Tea on arrival to give you the full experience of our museum.

[BOOK NOW](#)



COLLECTION

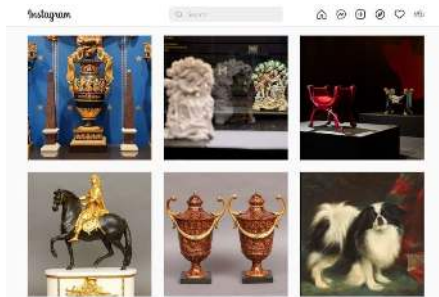
**Did you know that many of the items in
The David Roche Collection are available
to view online?**

*Use our collection search to find out more
about your favourite piece or discover
something new.*



Search the collection

KEEP IN TOUCH



We are on Facebook and Instagram!

*We provide regular content through our social
media channels. Follow us now to keep in the
loop.*



Facebook



Instagram



**The David Roche Foundation
House Museum**

**241 Melbourne Street
North Adelaide 5006**

T: [+61 8 8267 3677](tel:+61882673677)

E: info@rochefoundation.org.au

W: www.rochefoundation.com.au



TDRF acknowledges the Kaurna people as the traditional owners of the Adelaide region. We recognise and respect Kaurna heritage, beliefs and spiritual relationship with Country, and we pay our respect to Elders past, present and emerging.

Copyright © 2023 The David Roche Foundation, All rights reserved.

[update subscription preferences](#) [unsubscribe from this list](#).