
CLUB FERMOY

The David Roche Foundation House Museum newsletter



Image: The entry foyer to Fermoy House offers a taste of the treasures within David Roche's home.

Club Fermoy #35

Dear friends and supporters,

October proved to be a very busy month for the Foundation. Our conversation with jewellery expert Anne Schofield AM and *Fantastical Worlds* curator Eva Czernis-Ryl sold out, as did a special curator's tour of *Fantastical Worlds* led by Eva. Our ornately carved Regency convex mirror which recently featured in the *Robert Wilson: Moving Pictures* exhibition at the Art Gallery of South Australia, has returned and again hangs proudly in the entry foyer of Fermoy House. Be sure to take a close look at it when you next take a house tour!

This month, we are proud to support Feast Festival with a talk by Nick Henderson from the Australian Queer Archives, Melbourne. On 10 November at 6pm, Nick will shed light on South Australian LGBTQI+ treasures in the AQuA collection in his talk *Queer SA in the Australian Queer Archives*. The TDRF Lecture Series continues on 17

November at 6pm when art historian Dr Melanie Cooper explores life and art in the eighteenth century in her talk '*Fears, hopes and desires: an eighteenth century approach to Fantastical Worlds*'. These programmes are selling fast, so book now using the links in this newsletter to avoid disappointment.

The Foundation is most grateful to receive a life-size marble statue of a spaniel thanks to the generosity of Christopher Holland and Malcolm Lockie. This charming work is from the workshop of Florentine sculptor Lorenzo Bartolini (1777-1850), and makes a handsome addition to the collection.

Finally, on 8 December we will host our summer twilight evening. From 5.00-7.30pm you will have exclusive access to *Fantastical Worlds* outside of normal opening hours, with talks by curators on the works in the exhibition, and a selection of beverages available for purchase. Keep an eye out for your invitation to this exclusive event, which will be sent out in the coming week.

Best wishes,

Robert Reason
Museum Director

CURRENT EXHIBITION



Image: *Fantastical Worlds* installation. Photo: Sam Roberts.

FANTASTICAL WORLDS

The David Roche Foundation is proud to host *Fantastical Worlds*, a travelling exhibition developed by Powerhouse museum, Sydney, comprising playful arrangements of old and new.

The Powerhouse collection holds many objects that instil a sense of wonder. Made using a wide range of materials and techniques, they seduce us with their otherworldly beauty, stimulate our imagination and shed light on how we perceive ourselves and the world.

Fantastical Worlds is developed around works from four artists and designers: Timothy Horn, Alexander McQueen, Kate Rohde and Timorous Beasties. Inspired by elaborate European art styles from the past such as Baroque, Rococo and Empire, they imaginatively transform historical ideas, forms and patterns into striking 21st century creations. Playful arrangements of new and old complement these artworks, revealing creative brilliance behind contemporary and historical designs. For this iteration of the exhibition, Powerhouse ceramics, jewellery, silver, textiles and fashion are joined by decorative arts objects and paintings from The David Roche Foundation in a wondrous offering of dazzling form, ornament and colour.

[Details:](#)

Fantastical Worlds

Until 24 December 2022

Tuesday to Saturday 10AM – 4PM

No booking required.

[Exhibition entry:](#) \$15 adult. \$12 concession.
Children under 12 free.

FANTASTICAL WORLDS GUIDED TOURS



Image: Kate Rohde, *Deer vase* (detail) 2016. Powerhouse collection, purchased 2017. Photo: Sam

Learn more about the pieces in *Fantastical Worlds* by joining a tour led by one of our passionate volunteers. Tours take place each Friday at 11.15AM, and are free with your exhibition ticket. Numbers are limited, so be sure to book to reserve your place!

Book your ticket now

Don't forget to take a look at our *Fantastical Worlds* merchandise next time you visit. Our range includes Andrew Wilson's acclaimed biography of Alexander McQueen *Blood Beneath the Skin*; and a selection of tea towels designed by *Fantastical Worlds* collective Timorous Beasties. These items are only available in-store!

CANINE TIDBITS

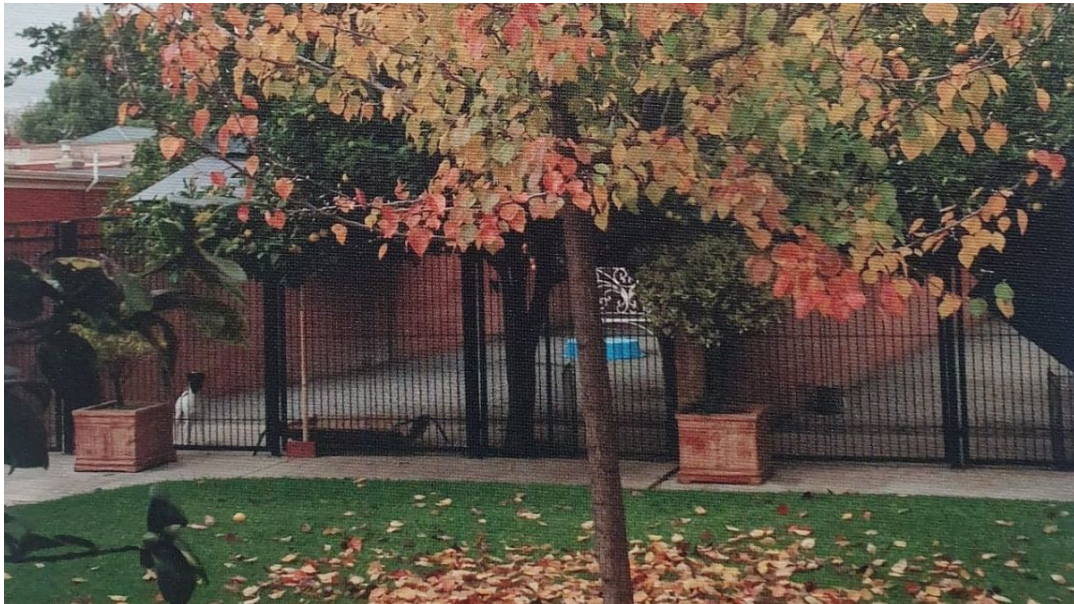


Image: This photo from the Fermoy Kennels kitchen window looks over the exercise runs. On the left of the image is Japanese and Aust Ch Graebrook Blak Orpheus. (Bobby), 2013.

In the same way David Roche put his attention and energy into creating his home, so he did with the building of the kennels for his dogs. He travelled extensively visiting other peoples' kennels and took advice and notice of the things they had created. He already had an idea of what he wanted and was fortunate to have purchased a property that suited his purpose.

The house and land on Melbourne Street in North Adelaide had many advantages, which included a citrus orchard with many mature trees that gave great shade in the summer months. This large area became the outdoor exercise runs. The kennel building was soundproofed and air conditioned, with covered indoor runs on either side of the building in case of rain. Purpose built, each dog had his or her own

sleeping compartment, and the facilities included a kitchen, bathroom, large grooming room and puppy pens.

David enjoyed both the house and kennel gardens with their lush lawns, roses, flowering plants and trees. He was justifiably proud of his kennels and happy to show overseas judges around Fermoy Kennels.

FROM THE ARCHIVES

November 2022 marks one century since Howard Carter's re-discovery of Pharaoh Tutankhamun's tomb in the Valley of the Kings, Egypt. David Roche's collection has many works that reference Egyptian themes, including a fabulous pair of armchairs thought to be previously owned by a great tastemaker and philanthropist.



Image: attributed to Thomas Chippendale the younger (Britain 1749-1822), *Egyptian revival armchairs* c. 1805, faux rosewood, parcel-gilt, cane, replacement silk cushions. (TDRF 1044)

While travelling to the United Kingdom and Russia in 1994, David Roche visited London antiques dealer Carlton Hobbs, and purchased this pair of Egyptian revival armchairs attributed to Thomas Chippendale the Younger. Chippendale was the eldest son of furniture designer and interior decorator Thomas Chippendale, and took over the family business in 1776, three years before his father's death.

The defining feature of these chairs are the Egyptian-style priestess busts which support the arm rails. Egyptian themes were popularised in art at the turn of the nineteenth century following the French campaigns in Egypt and Syria led by Napoléon Bonaparte. Several other treasures in David Roche's collection nod to the craze for Egyptian-themed items, including hardstone obelisks, furniture, clocks, and even a jasperware canopic jar by famed British pottery Wedgwood.

A set of eight chairs of this type were ordered in 1805 by Richard Colt Hoare for his residence Stourhead, Wiltshire at a price of 9 guineas apiece. Those chairs are still displayed in the Library at Stourhead, alongside two chairs of similar form without

armrests. The pair in The David Roche Foundation are part of a set of six which was dispersed through Christie's auctioneers in 1993. They are reputed to have come from the collection of Woolworth's fortune heiress Barbara Hutton. Martyn Cook recalled that David Roche met Barbara Hutton on several occasions, and admired her exceptional taste and philanthropic endeavours.

TODAY'S TREASURE

Showcasing the favourite pieces of our volunteers in The David Roche Collection. In this edition, Erin B discusses a large mug by Chamberlain's Worcester Factory.



Image: Chamberlain's Worcester Factory (Britain 1788-1852), Humphrey Chamberlain Jr. (Britain 1791-1824), decorator, *Mug 'The Power of Love'* 1813-15. Porcelain, polychrome enamel, gilt. TDRF 2945.

Robert Chamberlain (c.1736-98) began his own porcelain decorating business in 1783, originally decorating blank porcelain from other factories but by the late 1780's was making and decorating his own wares. In 1802 Admiral Lord Nelson and his mistress Lady Hamilton ordered an enormous breakfast, dinner and dessert service in Chamberlain's 'Fine Old Japan' pattern. In 1807, the Prince Regent (later George IV) awarded the Royal Warrant to Chamberlain's Worcester, and by 1811 a large book of designs has been created for him to select a dessert service.

Lord Nevill, Marquis of Abergavenny also ordered large and unique services in June 1813, including two huge mugs painted by Humphrey Chamberlain (*Bacchante* and *The Power of Love*), which cost £42. This order is widely considered one of the most important taken by the Chamberlain factory, with pieces being coveted by collectors and museums alike.

The David Roche Foundation's large *The Power of Love* mug is decorated in the same pattern as the one ordered by the Marquis, although without his crests and coronets, and dates to the same timeframe. The mug has a 4 ½ pint capacity (over

2.5 litres!) and is decorated with shell gilding and a salmon background. On the underside of the mug is an iron-red title and signature of Humphrey Chamberlain, and script mark 'Chamberlains Worcester/Porcelain Manufacturers/By Appointment/ to H. R. H./ The Prince Regent'.

Mr. Roche purchased *The Power of Love* mug from New Hampshire-based Northeast Auctions in 2011; it was previously among the stock-in-trade of Earle D. Vandekar of Knightsbridge Antiques, and was once part of Frances Louisa Dickson's significant collection of historic English ceramics. *The Power of Love* plays on the Latin phrase 'Omnia vincit Amor' ('Love Conquers All'), a quotation from Virgil's *Eclogues*. Hand-painted by Humphrey Chamberlain, the mug depicts Venus, goddess of love, reclining with a cherub and her son Cupid, the god of desire and erotic love.

Usually known as grace or loving cups, these were historically made in silver, and had two handles for ease of passing and drinking. They were used to toast to health at the end of a dinner or banquet, and customarily one of these would be passed around the table for all to toast the health of the host and to sip wine from. With only one handle, this is not a mug that would be easily shared around the table, especially not if filled to capacity at over 2L.

This enormous mug fits in so well to Mr. Roche's bedroom collection that it often goes unnoticed amongst the many other gilded treasures in his Ickworth cabinets. About 5 times the volume of a normal mug, it makes an eccentric piece to keep an eye out for on your next visit to The David Roche Foundation.

Erin B

To see *The Power of Love* and other significant examples of European porcelain, [book your tour](#) of Fermoy House today.

EVENT

Queer SA in the
Australian Queer
Archives
A talk by Nick Henderson

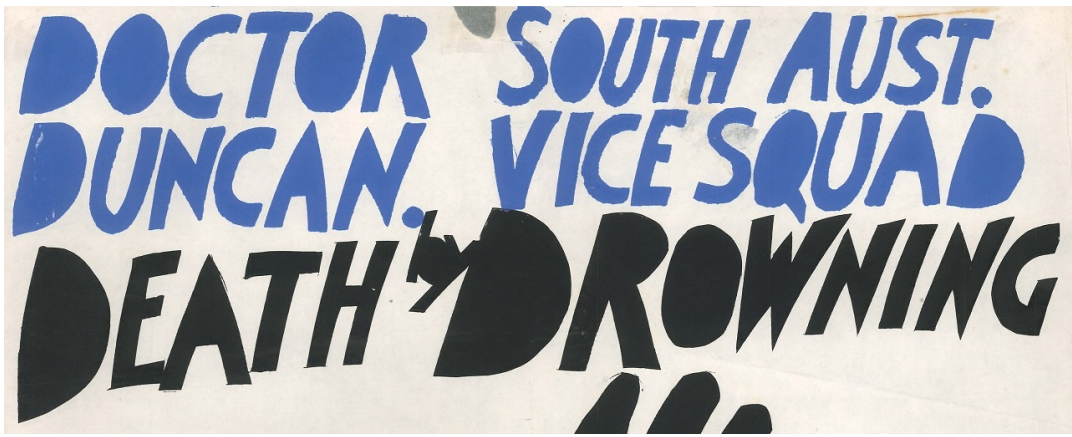


Image: Mark Lyndon Matheson, *Doctor Duncan. : South Aust. Vice Squad : Death by drowning : 10th May 1972 : Gay rights -when?* [poster] 1979 (detail), screenprint on paper. Collection: Australian Lesbian and Gay Archives, Melbourne, A188.

Thursday 10 November | 6PM

Join Nick Henderson to discover moments of South Australia's LGBTQI+ story through original materials held in the collection of the Australian Queer Archives (AQuA), Melbourne. The Australian Queer Archives was established in 1978, as an initiative of the 4th National Homosexual Conference. Over the last 44 years AQuA has developed the world's largest and most significant archive of historical Australian LGBTQI+ material. Nick will dig deep into AQuA's collections to highlight some of its South Australian treasures; from the pioneering oral history recordings and research of John Lee, which document pre-WWII kamp Adelaide, to the political activism of CAMP SA and the Adelaide Homosexual Alliance, the events of social clubs like Elagabalus Motor Club and 1346 Club, through to former venues like AC/DC and The Green Dragon.

About the speaker

Nick Henderson is a Curator at the National Film and Sound Archive and volunteer Collection Manager at the Australian Queer Archives. Nick has worked in curatorial roles across national and state cultural institutions for over 20 years. Over fifteen years with AQuA he has significantly expanded their program of exhibitions, acquisitions, public history programs, and profile. Key curatorial projects include *Sydney Mardi Gras Museum* (2013), *Gay times are here again* (2013), *Gay liberation photography* (2014), *Out of the closets, into the streets* (2015), and *Printed Protest: graphic activism from the Australian Queer Archives* (2022).

[Book your ticket now](#)



Feast
FESTIVAL

EVENT

Fears, hopes and desires

A talk by Dr Melanie Cooper



Image: studio of Jean-Marc Nattier (France 1685-1766), still-life elements attributed to Alexandre-François Desportes (France 1661-1743), *Portrait of a Lady in the guise of Diana* c. 1740 (detail), oil on canvas in gilt wood frame. TDRF 2671.

Thursday 17 November | 6PM

Developed as an immersive experience, *Fantastical Worlds* invites audiences to engage with historical and contemporary art works and objects in an openly playful manner, privileging personal discovery over the presentation of information. For curator Eva Czernis-Ryl, the exhibition aims to highlight the 'fears, hopes and desires' represented in selected objects and the connections that can be found between them. Written from an art historical perspective, Melanie's talk explores a range of cultural anxieties and lingering associations

with the fantastic as a viewer with eighteenth-century expertise.

About the speaker

Melanie Cooper is a visual artist, art historian and educator. She is currently a Visiting Research Fellow at the University of Adelaide and teaches Drawing, Painting and Art History at the Adelaide College of Arts and Adelaide Central School of Art. Her research is grounded in the visual art and material culture of the eighteenth century and reflects an enduring interest in mythology, early modern theories of evolution and natural philosophy, gender, and sexualities. Her teaching and research practice also reveals a growing fascination with iconoclasm and contemporary art.

[Book your ticket now](#)

EVENT

Fantastical Worlds Twilight Evening



Thursday 8 December | 5.00-7.30PM

Join us in welcoming in the warmth of summer with our Twilight Evening!

TDRF will open late on the evening of Thursday 8 December from 5 to 7:30PM to give you an extra opportunity to experience the treasures within *Fantastical Worlds*. Museum Director Robert Reason and Curator Tim Roberts will deliver pop-up talks in the Gallery about key works and themes in the exhibition, and a bar will be open for refreshments.

Cost: \$20, includes exhibition entry and a complimentary glass of wine on arrival. Children under 12 free.

Numbers are strictly limited for this event. Book now to avoid disappointment.

[Book your ticket now](#)

NEW ACQUISITION

The David Roche Foundation welcomes a nineteenth century marble statue of a dog from the workshop of Lorenzo Bartolini.



Image: attrib. Lorenzo Bartolini, *Cane con beccaccia* c. 1840, marble. TDRF 4043.

The David Roche Foundation is most grateful to receive *Cane con Beccaccia* c. 1840 from the workshop of Lorenzo Bartolini. This impressively carved marble statue of a dog laying at rest with a woodcock firmly under its paw is generously donated by Christopher Holland and Malcolm Lockie in honour of their parents, Michael and Jennie Holland and Alan and Norma Lockie.

Lorenzo Bartolini is regarded as one of the most significant Italian sculptors of the early 19th century and is compared to Antonio Canova for the quality of his work. After initial training in Florence and Paris which caught the eye of Napoléon, he

was particularly noted for his monumental works and portrait busts, which were taken up largely by British Grand Tourists during the 1810s and 20s. He enjoyed several monumental commissions from expatriate dignitaries living around Florence from the 1830s onwards including memorial monuments to Sebastian Kleiber (1836), Sofia Czartoryski (1837), and Nikolai Demidoff (1840). It is within this period of stable patronage that *Cane con Beccaccia* is made.

The work's plinth is inscribed BARTOLINI DIEDE ABBOZZATO A SNO KLEIBER NEL 1825 TERMINO IN SEGNO DI RICONOSCENZA ALL AMICO ORAZIO E COSTANZA HALL LI 1840 (Bartolini gave a sketch to Mr Kleiber in 1825 and finished as a sign of gratitude to his friends Horace and Costanza Hall in 1840). The inscription suggests that the work may have been made following the Hall's commissioning Bartolini to design a memorial to their uncle Sebastian Kleiber. A gesso model of the sculpture is preserved in the Bartolini gipsoteca in the Museo Civico, Prato.

The work's distinguished provenance saw it purchased by James O. Fairfax AC from Heim Gallery in 1969. At the same time, Fairfax purchased a painting and preliminary sketch by Venetian artist Domenico Tiepolo, which are today held in the Art Gallery of New South Wales. Like Mr Roche, Mr Fairfax not only possessed a discerning eye for fine works of art, but loved dogs, including several Rhodesian Ridgebacks in his later life. From December, *Cane con Beccaccia* will be displayed among other examples of marble statuary collected by David Roche.

The David Roche Foundation thanks Messrs Holland and Lockie for their generosity. If you are interested in furthering David Roche's vision through the donation of works of art or making a financial contribution to the museum, please contact Museum Director Robert Reason for a confidential discussion.

MEMBERSHIP



Have you considered joining The David Roche Foundation House Museum membership?

By joining, you will be able to enjoy a variety of fantastic benefits, including:

- access to exclusive tours and special events
- a 25% discount on house tours and exhibition entry fees
- 10% off lecture tickets
- 10% off shop purchases
- and so much more!

In addition, you will be supporting TDRF to continue presenting world-class exhibitions, lectures with expert guest speakers from across the country and acquiring important pieces to add to the Collection.

Sign up to TDRF membership today, so you can be part of one of Australia's finest art institutions!

For more information about the membership or to sign up, click the button below to visit the Membership page on our website or contact memberships@rochefoundation.org.au.

Find out more

CHRISTMAS SHOPPING



Christmas is coming, and The David Roche Foundation has a selection of delightful Christmas cards drawn from works in the collection. Choose from an eighteenth century Russian icon *Korsunskaya, Mother of God*, or Chelsea Porcelain Factory *Madonna and Child* c. 1755. They're just \$15 for a pack of 5 cards and envelopes.

We also have a range of great publications on offer, including titles on art history, fashion, and our collection of books on aspects of David Roche's

collection.

Order online at <https://www.rochefoundation.com.au/shop/> or by calling us on (08) 8267 3677 or emailing us at info@rochefoundation.org.au (with your contact details). Click and collect is available.

We now post internationally!

Visit the shop

COLLECTION



Did you know that many of the items in The David Roche Collection are available to view online?

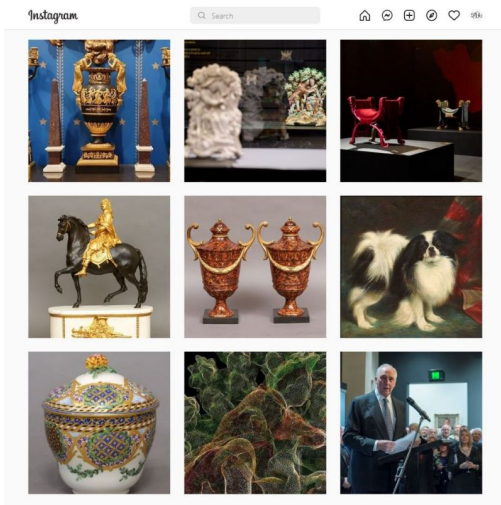
Search by title, artist, type, materials, and place made to find out more about your favourite piece or discover something new.

Search the Collection

SOCIAL MEDIA

We are on Facebook and Instagram

We provide regular content through our social media



channels. Follow us now to keep in the loop.



Facebook



Instagram

LINKS WE LOVE

Our *Fantastical Worlds* featured artist this month is design studio Timorous Beasties. Led by Alistair McAuley and Paul Simmons, Timorous Beasties create provocative textile patterns using visually rich designs. In 2015 the Victoria & Albert Museum interviewed McAuley and Simmons about their practice, and have preserved this on their YouTube channel. [Watch it here](#).

If you wanted to see more of the work that Timorous Beasties offer, [visit their website](#). Don't forget, we also stock Timorous Beasties tea towels in-store!



The David Roche Foundation

House Museum

241 Melbourne Street

North Adelaide 5006

T: [+61 8 8267 3677](tel:+61882673677)

E: info@rochefoundation.org.au

W: www.rochefoundation.com.au



TDRF acknowledges the Kaurna people as the traditional owners of the Adelaide region. We recognise and respect Kaurna heritage, beliefs and spiritual relationship with Country, and we pay our respect to Elders past, present and emerging.

This email was sent to <<Email Address>>

[why did I get this?](#) [unsubscribe from this list](#) [update subscription preferences](#)

The David Roche Foundation · 241 Melbourne St · NORTH ADELAIDE, SA 5006 · Australia