
CLUB FERMOY

The David Roche Foundation House Museum newsletter



Image: Timothy Horn, *Gorgonia 15*, nickel-plated bronze and mirrored blown glass, USA, 2018. Powerhouse collection, purchased with funds from the Barry Willoughby Bequest, 2018. Photo: Marince Kojdanovski. In *Fantastical Worlds*, opening 13 August 2022.

Club Fermoy #32

Dear friends and supporters,

August is a busy month for the museum. On the back of the success of *Doppelgänger and Zombies - Decorative Arts in the Digital Age*, the Gallery is currently being rehung with a dazzling array of works for the upcoming exhibition *Fantastical Worlds*. This travelling exhibition developed by Powerhouse museum, Sydney, will display a number of works from The David Roche Collection alongside historic and contemporary art, fashion and design from Powerhouse's collection. The doors to this wonderful show open on 13 August, and is complemented by a range of talks and programs presented from September through to December.

Adelaide-based sculptor Georgina Mills has recently installed work in the Roman Room for the 2022 SALA Festival. TDRF has been a proud supporter of local artists and SALA since opening in 2016, and we are very pleased to present over a dozen of Georgina's figural sculptures that evidence her artistic progression since returning to Australia from several years of study in Florence. I encourage you all to visit this free exhibition throughout August, and to visit other SALA events across South Australia this month.

The Foundation is pleased to welcome a donation of ceramics into the collection, thanks to the generosity of Alastair Hunter. The works are representative of various British potteries from the mid-18th to mid-19th centuries, and make a wonderful addition to the expansive collection of British ceramics that David Roche collected. More details can be found on these objects further in this newsletter, and visitors to Fermoy House will see these pieces on display in the Den and Military Dining Room.

Finally, when you next visit the museum, don't forget to inspect the new display of white porcelain, pottery, and marble from the collection in the hallway aviary. There's always something new to see at The David Roche Foundation, and we look forward to welcoming you back soon.

Best wishes,

Robert Reason
Museum Director

EXHIBITION



Image: Georgina Mills, *I look at and see through you* 2020

SALA 2022 GEORGINA MILLS

In conjunction with SALA Festival, Adelaide sculptor Georgina Mills presents recent work in *Reframing*. *Reframing* aims to influence the viewer's position on classical art in Australia and to see it placed amongst the contemporary art scene. A progression of sculptures illustrate Georgina Mills' figurative development from her studies at Florence Academy of Art and Post-graduation artist residency in Italy to her current work created in Adelaide.

Reframing is an opportunity for Georgina to hold a 'mirror' to her growth as an artist and for us all to more fully appreciate figurative sculpture. See how her academic training in Florence has informed and changed to meet her current environment in Australia.

Details:

SALA 2022
Georgina Mills: Reframing

2 August - 3 September 2022

Tuesday to Saturday 10AM – 4PM

No booking required.

Exhibition entry: free.

Roman Room Only



OPENING SOON



Image: Peter Chang, *Bracelet*, plastics and silver, Scotland, 2004. Powerhouse collection, purchased 2005. Photo: Marinco Kojdanovski

FANTASTICAL WORLDS

From 13 August 2022, The David Roche Foundation plays host to *Fantastical Worlds*, a travelling exhibition developed by Powerhouse museum, Sydney, comprising playful arrangements of old and new.

The Powerhouse collection holds many objects that instil a sense of wonder. Made using a wide range of materials and techniques, they seduce us with their otherworldly beauty, stimulate our imagination and shed light on how we perceive ourselves and the world.

Fantastical Worlds is developed around works from four artists and designers: Timothy Horn, Alexander McQueen, Kate Rohde and Timorous Beasties. Inspired by elaborate European art styles from the past such as Baroque, Rococo and Empire, they imaginatively transform historical ideas, forms and patterns into striking 21st century creations. Playful arrangements of new and old complement these artworks, revealing creative brilliance behind contemporary and historical designs. For this iteration of the exhibition, Powerhouse ceramics, jewellery, silver, textiles and fashion are joined by decorative arts objects and paintings from The David Roche Foundation in a wondrous offering of dazzling form, ornament and colour.

Details:

Fantastical Worlds

Opening 13 August 2022

Tuesday to Saturday 10AM – 4PM

No booking required.

Exhibition entry: \$15 adult. \$12 concession.
Children under 12 free.

FROM THE ARCHIVES

On 21 August 1930, Queen Elizabeth II's younger sister, Her Royal Highness, The Princess Margaret, Countess of Snowdon, was born. Through inheritance and tasteful acquisitions in her lifetime, The Princess Margaret accumulated an important collection of art and decorative arts that dressed her residence at Kensington Palace, and a diverse collection of jewellery and fashion which reflected her personal taste and style.

In 2000, The Princess Margaret commissioned Florentine master sculptor Folco Romanelli to produce a replica of the Apollo Belvedere, held in the Musei Vaticani to complement other statuary in the Kensington Palace Gardens. The Romanelli Foundry proposed an edition of 5 works, to learn that The Princess Margaret has decided not to proceed with the commission. As a result, only the first cast of the edition was ever made, which was purchased by David Roche in 2011 for the garden surrounding the swimming pool at Fermoy House. Today this sculpture proudly stands in the Gallery's atrium.



Image: Top Left: Her Royal Highness, The Princess Margaret in 1951, wearing a Christian Dior gown, photographed by Cecil Beaton. Top Right: Folco Romanelli Foundry, Florence, *after the Apollo Belvedere* 2000, bronze, gilt (TDRF 2923). Bottom: Britain, *Bench standards* c.1830, cast iron, wood (TDRF 2174).

The Apollo statue was not David Roche's first acquisition of a work once owned by The Princess Margaret. In 2003 he purchased a pair of British Greek Revival cast iron bench standards, which according to the dealer who sold the works, had been acquired from the Countess of Snowdon's collection. Originally installed in David Roche's garden, they today are available for visitors to rest on during their visits to the Gallery.

Following The Princess Margaret's death in 2002, over 1,000 works from her collection were offered for auction at Christie's in 2006. David Roche was keenly interested in this auction, and instructed his friend and inaugural director of the Foundation, Martyn Cook, to bid on several lots at the sale, including Louis XV-period gold snuff-box, a pair of George IV 'Klimsos' armchairs, a fire-screen once owned by Queen Mary, and various other snuffboxes, seals, and etui. The enormous interest in the sale sadly ensured these items were beyond reach, but Martyn Cook returned with one treasure: an ivory brisé fan painted around 1780 with a scene of a sleeping cupid being woken by nymphs, after a painting by Angelica Kauffman which can be viewed in the Chinoiserie bedroom of Fermoy House.



Image: Britain, Ivory brisé fan with painted scene after Angelica Kauffman, formerly owned by Her Royal Highness, The Princess Margaret, Countess of Snowdon (TDRF 2591)

TODAY'S TREASURE

Showcasing the favourite pieces of our volunteers in The David Roche Collection. In this edition, Lesley S discusses *Psyche and Cupid* by Robert Jacques François LeFèvre.



Image: Robert Jacques François LeFèvre (1755-1830), *Psyche and Cupid* c. 1800 (TDRF 2639)

This painting in the David Roche collection by the French artist Robert LeFèvre (1755 – 1830) depicts an ancient mythological scene with two figures in a garden. Cupid (Eros in Greek) son of Venus (Aphrodite in Greek) representing divine Love, is leading Psyche, representing the human Soul, through the garden. These lovers are in fact about to be newly wed.

The picture contains a number of features that delight the eye and mind: references to a lost paradise, cool sensual nudes and a polished, highly finished realism. The colours are sumptuous from the flesh tones, the yellow diaphanous drape on Cupid, the red rose bush, the white of his feathered wings and the clear colours of the landscape in the background. One's gaze is also drawn to their clear-skin complexions and the fine painting of Cupid's bow and quiver of arrows. These features reflect the neoclassical style in the visual arts as interpreted by the aesthetic culture of Revolutionary France.

This mystical marriage can be seen as an allegory of the struggle of the Soul, personified by Psyche, which finds ultimate grace in the union with Love. The story from Apuleius, the Roman 2nd century author, tells of how Venus, goddess of love, became jealous of Psyche whose beauty rivalled her own. In the face of such beauty the populace began to abandon the shrines of Venus and neglect their devotion to her. Punished by the enraged goddess, Psyche is forced to endure tortuous trials until following the intervention of Jupiter the two lovers were finally permitted to

marry.

Roses are a conspicuous feature in the painting. There is a wreath of red roses around Cupid's head and white roses for Psyche. In the mid ground a large red rose bush. This is a deliberate reference to the accepted meaning of the flower in ancient Greek myth, where it is closely associated with Aphrodite, Eros' mother and thus representative of love. There are two fascinating stories about the origin of the attachment of the rose to Aphrodite. In one version according to the Greek lyric poet Anacreon, during the wars of the Titans, Ouranus god of the sky, was attacked by his rebellious son Chronos, who with a sickle rather gruesomely severed Ouranus' genitalia. As his father's testicles fall into the sea, Aphrodite is born. And as the sea foam around her touches the earth, bushes of white roses appear. In the other story, Aphrodite's lover Adonis is out hunting and being forewarned of his impending harm she rushes to rescue him. In her haste she scratches herself on a rose bush, splashing droplets of blood on the white petals and turning them red. Adonis however is fatally wounded and his spilled blood falls on to the ground which gave birth to the red anemone.

Lesley S

Robert LeFèvre's painting Psyche and Cupid hangs in David Roche's bedroom. To see this masterpiece and other enthralling examples of French painting, [book your tour](#) of Fermoy House today.

CANINE TIDBITS



Image: Mr Roche presenting the silver trophy to Ch. Marberlane's Minuet, Morris and Essex Kennel Club, 2 June 1955. Photographer: Evelyn M Shafer, 340 West 72nd Street, New York City.

After acquiring his All Breeds License to judge pure bred dogs in 1952 at the age of 22, David embarked on his International Judging career.

Already well known to the dog fancy in the United Kingdom and the United States, David was invited to judge at the prestigious Morris and Essex Dog Show. This show was first held in 1927 and financed by Geraldine Rockefeller Dodge.

The event was held on the polo fields of her husband's estate in Harding Township , New Jersey. Morris and Essex show was noted for the size of their entries , the quality and elegance of the event.

David Roche first judged the Morris and Essex show in 1955 and his Kerry Blue winner was Ch. Marberlane's Minuet.

June A

NEW ACQUISITION

The David Roche Foundation is pleased to welcome six 18th and 19th century British ceramics into the collection, generously donated by Alastair Hunter.



Of special note is a green-glazed creamware teapot, produced at Leeds c. 1775. The austere cylindrical shape of the pot enhances the double intertwined strap handle, terminating in applied foliage and flowers. Teapots of similar design have been attributed to Hartley Greens & Co and Castleford Pottery, and a pattern book for Hartley Greens & Co held in the Victoria and Albert Museum, London shows various vessels with similar intertwined handles and foliate terminals. The David Roche Collection holds a smaller teapot with similar decoration in yellow glaze, which will make a handsome companion to this work.



Another striking work in Mr Hunter's gift is a porcelain teapot made at Chamberlain's Worcester Factory c. 1800. This large piece is hand-painted with the impressive 'Dragon in compartments' pattern, which depicts a Kylin and fire-breathing dragon-like animal in alternate panels. Mr Roche purchased a number of 18th century Chinoiserie and Japanese-inspired Worcester patterns including 'Jabberwocky', 'Pavilion' and 'Old Japan Fan', but no examples of 'Dragon in compartments', making this a valuable addition to the collection. Wedgwood and Whieldon-type teapots are also included in the donation.



Two mugs were also gifted, namely a large Prattware mug in faux malachite with a transfer scene of 'The Jolly Toppers' by artist and engraver Jesse Austin, and a large mug made at Sunderland c. 1820 decorated with lustre glaze and a transfer print of the first Wearmouth Bridge, based on a 1798 aquatint by John Raffield after Robert Clarke. A frog inside the mug is a surprising amusement for the person imbibing the vessel's contents.



Mr Hunter's generous donation was made in memory of Tom and Elizabeth Hunter through the Australian Government's Cultural Gifts Program. If you are considering making a donation of art, decorative arts, or funds to the Foundation, please contact Museum Director Robert Reason on 08 8267 3677.

EVENTS



Image: Nora Rochel, *Ring*, fair trade silver, Germany, 2013. Powerhouse collection, purchased with funds from the Yasuko Myer Bequest, 2013. Photo: Sotha Bourn. This jewel and other exquisite works of art, decorative art, and fashion will be displayed in *Fantastical Worlds*, opening 13 August 2022.

A wealth of events are planned for our upcoming exhibition *Fantastical Worlds*. Mark them in your diary now, and keep an eye out for your invitation when we release tickets!

SEPTEMBER

Thursday 22: 6PM: *Fantastical Worlds* curator Eva Czernis-Ryl from Powerhouse joins us to speak on the development of the exhibition

OCTOBER

Saturday 8: 1PM – 4PM *Fantastical Worlds* contemporary artists and designers talk about their practice: Kate Rohde, Jordan Gogos and collaborator Denis Vukcevic, and Stephen Bowers

Thursday 20: 6PM: Jewellery in *Fantastical Worlds* is explored with renowned expert Anne Schofield in conversation with curator Eva Czernis-Ryl

Friday 21: 10.30AM: Join us for morning tea and a special tour of *Fantastical Worlds* with curator Eva Czernis-Ryl from Powerhouse

NOVEMBER

Thursday 17: 6PM: Art Historian Dr Melanie Cooper explores the world of rococo art in response to *Fantastical Worlds*

DECEMBER

Thursday 8: 5-7.30PM: It's our summer Twilight evening for *Fantastical Worlds*!

MEMBERSHIP



Have you considered joining The David Roche Foundation House Museum membership?

By joining, you will be able to enjoy a variety of fantastic benefits, including:

- access to exclusive tours and special events
- a 25% discount on house tours and exhibition entry fees
- 10% off lecture tickets
- 10% off shop purchases
- and so much more!

In addition, you will be supporting TDRF to continue presenting world-class exhibitions, lectures with expert guest speakers from across the country and acquiring important pieces to add to the Collection.

Sign up to TDRF membership today, so you can be part of one of Australia's finest art institutions!

For more information about the membership or to sign up, click the button below to visit the Membership page on our website or contact memberships@rochefoundation.org.au.

Find out more

ONLINE SHOP



In the cooler months it's the perfect weather to engage in some indoor activities! Why not spend time with a friend or family putting together our 1,000 piece jigsaw puzzle? Featuring a reproduction of the *Butcher's shop diorama* c. 1850, this is a fun pursuit for any age, and is priced at \$30.

The shop also has mugs for your warm winter drinks priced at \$20, and plenty of books to read on cold winter nights.

Order online at <https://www.rochefoundation.com.au/shop/> or by calling us on (08) 8267 3677 or emailing us at info@rochefoundation.org.au (with your contact details). Click and collect is available.

Visit the shop

COLLECTION

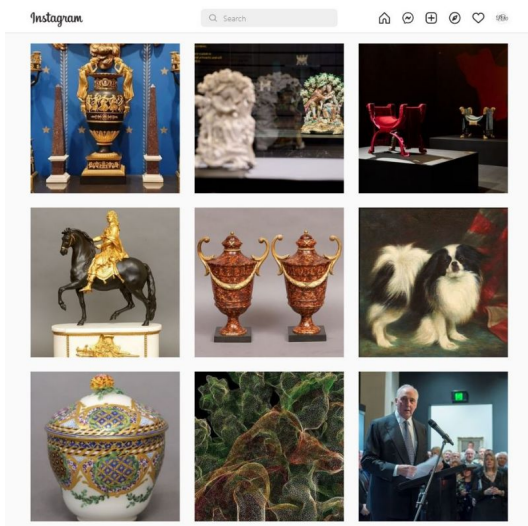


Did you know that many of the items in
The David Roche Collection are available to view online?

*Search by title, artist, type, materials, and place made to find
out more about your favourite piece or discover something new.*

Search the Collection

SOCIAL MEDIA



We are on Facebook and
Instagram

We provide regular content
through our social media
channels. Follow us now to keep
in the loop.



Facebook



Instagram

LINKS WE LOVE

Throughout August, The South Australian Living Artists Festival celebrates South

Australia's vibrant visual arts community. In addition to The David Roche Foundation's presentation of recent work by sculptor Georgina Mills, many venues across the state are showcasing local talent. Take a look at what's on display in your local area, or join some online programs through the [SALA website](#).

If you would like to find out more about Georgina Mills' sculptures, view her website [here](#).



The David Roche Foundation
House Museum

241 Melbourne Street
North Adelaide 5006

T: [+61 8 8267 3677](tel:+61882673677)

E: info@rochefoundation.org.au

W: www.rochefoundation.com.au



TDRF acknowledges the Kaurna people as the traditional owners of the Adelaide region. We recognise and respect Kaurna heritage, beliefs and spiritual relationship with Country, and we pay our respect to Elders past, present and emerging.

This email was sent to <<Email Address>>

[why did I get this?](#) [unsubscribe from this list](#) [update subscription preferences](#)

The David Roche Foundation · 241 Melbourne Street · North Adelaide · Adelaide, SA 5006 · Australia

