
CLUB FERMOY

The David Roche Foundation House Museum newsletter



Image: A view to our front courtyard garden.

Club Fermoy #29

Dear friends and supporters,

David Roche's garden was always a source of great pride and joy and was created as an extension of his collection – a place to display antique marble sculptures, fountains, cast iron furniture and planters and decorative reliefs. It set the scene for the house's remarkable collection. That tradition continues, and during autumn our gardeners have been busy at the Roche Foundation clipping the hedges before winter and tending to the garden beds.

Our rare and significant Queensland lacebark (pink kurrajong) tree has finished its beautiful summer display and is now busy growing its leaves for winter. If you haven't already, it's well worth spending time enjoying the art and gardens when you visit, including English sculptor, Nic Fiddian-Green's life-size bronze, *Mother of Mercy*, 1999.

The final weeks of our fashion exhibition *Silhouettes* are upon us and we have some great events in May. Book to hear Skye Bartlett and Nikki Sullivan (SAMESH) discuss the importance of fashion in remembering as part of South Australia's History Festival, and editor and arts consultant Alison Kubler joins us for *Canvas to Catwalk - The Spectacle of 1980s Fashion- from Warhol to Versace*. See all the details in this issue and reserve your seat now!

Best wishes,

Robert Reason
Museum Director

EXHIBITION

SILHOUETTES

Fashion in the Shadow of HIV/AIDS



Image: Couture of Clovis Ruffin in *Silhouettes*.

Curated by Skye Bartlett (SAMESH), *Silhouettes* explores the lives and works of some of fashion's brightest stars from the late 20th century from household names like Halston and Moschino to revolutionary black designers Willi Smith, Patrick Kelly and Fabrice Simon.

The first of its kind, the exhibition is receiving glowing reviews – Megan Koch of *Arts Hub* gave the exhibition 4 stars: "With over 100 vintage designer pieces on display, it's easy to get caught up in the beauty of the clothes – the fur, feathers and beading, the technicolour silks and soft knits, the patterns, the textures, and indeed, the silhouettes ... Whether you're there for the fashion or the history, or both, *Silhouettes* makes for a fascinating collection."

Jane Llewellyn from *In Review* wrote: "*Silhouettes* is a joyful, vibrant and colourful array of fashion objects... While *Silhouettes* is a poignant reminder of the ongoing HIV/AIDS epidemic, it also celebrates the glitz and glamour of fashion and pays tribute to these talented individuals." While Alison Kubler for *Escape* notes "It's such an important show and ultimately uplifting."

Visit *Silhouettes* now.

Details:

Silhouettes: Fashion in the Shadow of HIV/AIDS

Until 18 June 2022

Tuesday to Saturday 10AM – 4PM

No booking required.

Exhibition entry: \$12 adult. \$10 concession.

Children under 12 free.

Guided house tour & exhibition entry: \$20 adult. \$17 concession.

Children under 12 free.

Guided tours of *Silhouettes*

Each Friday 11:15am

(Curator's tour second Friday of the month)

Register for a guided tour

FROM THE ARCHIVES



Image: The HMS Resolution Table on loan to the National Library of Australia.

From a young age David Roche was introduced to museums and galleries by his father, who on family trips to Europe and England arranged for the director to meet them and show them the finest works. David's appreciation of public collections never diminished and later in life he was able to support a range of institutions.

In 2000 he donated funds toward De Chazal De Chamerel's important *Portrait of Captain Matthew Flinders 1806–07*, in memory of his father to the Art Gallery of South Australia (AGSA). Then in 2004, he funded the purchase of a superb *Australian colonial sideboard 1815–1820*, in memory of his mother for the Powerhouse Museum in Sydney.

Amongst other gifts were a dozen colonial presentation trowels with links to South Australia, including the AGSA's own trowel which David gifted to commemorate the Gallery's 125th anniversary in 2006. David also regularly lent important items to his hometown institutions as well as the National Library of Australia, which displayed the *HMS Resolution table*, c.1810, for well over a decade and the Powerhouse Museum which exhibited his superb *Meissen Swan service dish* c.1738.

David's philanthropy also extended to many animal welfare causes where he was a generous supporter. He paid veterinary bills for people who otherwise would not have been able to save their pets. He gave funds to upgrade the dog park, known as the 'David Roche Park' in Kilburn and at the Royal Adelaide Showgrounds, Wayville, the dog pavilion was for many years known as the 'David Roche Pavilion' in gratitude for his support of the infrastructure for canine shows as well as trophies and prizes. David supplied many trophies over the years including 'The Sydney Cup' for Breeder of Best in Show presented by the Sydney Kennel Club c.2000; and Best in Show for the Santa Barbara Kennel Club, California, in 2005.

In recognition of David's service to the community as a benefactor to cultural institutions, and significant supporter and figure within the canine world, he was posthumously awarded an AM (Member in the General Division of the said Order of Australia) in June 2013, just months after he died on 27 March 2013, aged 83.

TODAY'S TREASURE

Showcasing the favourite pieces of our fantastic guides and volunteers in The David Roche Collection. In this edition, Geoff S. discusses the Chelsea Porcelain Music Lesson.



Image: Chelsea Porcelain Music Lesson.1765.

Chelsea (named for its location in London) was a short-lived manufactory with its origins in 1745 set up by two Frenchmen, both Huguenots, silversmith Nicholas Sprimont and jeweller Charles Gouyn. It produced luxury soft paste porcelains for a

rich, fashionable and aristocratic clientele. *The Music Lesson* is from Chelsea's Gold Anchor period, dates from around 1765, and was acquired by David Roche in 2001 from the Harold Schenberg Collection at a Christie's auction in Melbourne.

There are 6 extant examples of *The Music Lesson* with the 5 others being in the collections of the Metropolitan Museum in New York, the Victoria and Albert Museum in London, the National Gallery of Victoria, Upton House in Warwickshire and the Boston Museum of Fine Arts. Given the complexity of these objects and the way in which they were made, none of the examples are exactly alike, and there are differences in the enamel colours used to decorate each piece as well as in the porcelain aspects.

The Met says of *The Music Lesson*: "This large and ambitious figure group is one of the most important pieces of porcelain sculpture made at the Chelsea factory."

The Music Lesson is adapted from a Sèvres biscuit group by Etienne Maurice Falconet ca 1752 which was based on a 1748 painting (*L'Agréable Leçon*) by Francois Boucher (1703–1770). This subject of a shepherd boy teaching a shepherdess to play the flute was extremely popular and produced on enamels, fan painting, Chinese painted mirrors and porcelain. Joseph Willems, the skilled porcelain modeller at Chelsea, was responsible for realising the piece in three dimensions. Boucher's most original contribution to Rococo painting was the reinvention of the pastoral, a form of idealized landscape populated by shepherds and shepherdesses in silk dress, enacting scenes of erotic and sentimental love. This begs the question: is this a music lesson or something else?

The production of figures was a major focus for the Chelsea manufactory and the prominence accorded to figural work coincided with the arrival at the factory in 1748 of the modeller, Joseph Willems. His output at Chelsea was prodigious and his versatility is evident in the types of figures he created, including the Italian *comedia delle'arte* (e.g *The Harlequin* at TDRF), street merchants, chinoiserie figures, birds and animals. Although he often looked to the work of other artists and to the figures of Johann Joachim Kandler at Meissen in particular, his skill as a modeller ensured that his figures transcended mere copying.

The David Roche Foundation is fortunate to have in its collection one of Chelsea's most significant pieces, which in turn reflects David Roche's incredible eye for quality and beauty.

CANINE TIDBITS



Image: "Cappy" prior to David's ownership.

David Roche created a superb facility in which to house his dogs in North Adelaide, and Fermoy Kennels became synonymous with the breeding of quality dogs, most notably Kerry Blue Terriers and Afghan Hounds. As an International All Breeds Judge, David adjudicated at shows throughout the world and it enabled him to visit many top kennels. Having imported many exceptional dogs over the years he was always driven to enhance his breeding program.

On one such trip to the United States in the sixties, David saw a Kerry Blue male and knew immediately this was a dog he wanted at Fermoy. American Champion Tregoad's Vicky's Cappy, the sire of American Champions also sired seven English Champions during his stay in the United Kingdom. David campaigned "Cappy" to his title in England before bringing him to Australia where he was a Best in Show winner and a successful sire. Cappy was titled in three countries and was American, English, and Australian Champion Tregoad's Vicky's Cappy (Imported USA).

EVENTS

Fashioning Memory:
A Special Guided Tour of Silhouettes



A talk by **Nikki Sullivan & Skye Bartlett**
(guest curator of *Silhouettes*).

Thursday 12 May | 5PM

Nikki Sullivan and Skye Bartlett from SAMESH will talk on the importance of remembering and memorialisation in the exhibition *Silhouettes: Fashion in the Shadow of HIV/AIDS*.

How is memory fashioned? And what role can and does fashion, and its display, play in the process of memorialisation? In this talk Dr Nikki Sullivan will explore the political work that memorialisation performs, in particular in relation to LGBTQ+ histories. Taking fashion as an example, Nikki will demonstrate that memory (literally) matters: that it fashions (and is fashioned by) our pasts, our presents, and our possible futures. Nikki's talk will be followed by a guided tour of *Silhouettes: Fashion in the Shadow of HIV/AIDS*, in which she and Skye Bartlett will discuss some significant designers whose contributions have largely not, until now, been remembered.

About the speakers

Dr Nikki Sullivan is a Project Coordinator at SAMESH and an Adjunct Associate Professor in the School of Humanities at the University of Adelaide. Prior to joining SAMESH she worked in the museum sector for seven years, and as an academic for just over two decades. Nikki has published widely on gender and sexuality and is the co-author (with Craig Middleton) of *Queering the Museum* (Routledge, 2020).

Skye Bartlett is a fashion historian and historic fashion and textile collector. He is also the team manager of the South Australia Mobilisation and Empowerment for Sexual Health – SAMESH, a peer led HIV prevention program as a partnership between SHINE SA and Thorne Harbour Health.

[Book Here](#)

Canvas to Catwalk: The Spectacle of 1980s Fashion - from Warhol to Versace



A talk by **Alison Kubler**
writer, editor & art consultant

Image, Left: Thierry Mugler Autumn/Winter Fashion Show 1984-85, Paris. Photograph by Chris Moore

Thursday 19 May | 6PM

The fashions of the 1980s are both celebrated and reviled; regularly aped and appropriated in the current era where everything is “in fashion” this lecture looks deeper at some of the high fashion moments that decadent decade brought us, with its pop music and art collaborations, and unbridled exuberance. From Jean Paul Gaultier’s man skirt to Thierry Mugler’s spectacular runway shows through to Versace’s Warhol homages, we bask in the high drama of it all.

About the speaker

Alison Kubler has a double major in Art History from the University of Queensland, Australia, and a Masters in Post-war and Contemporary Art History from Manchester University, England. Kubler has over 20 years experience working as a curator in museums and galleries in Australia. She worked as Arts Adviser to the Federal Minister for the Arts and Sport, and is a Member of the Council of the National Gallery of Australia, and an Ambassador for the Institute of Modern Art. Alison is a regular contributor to art journals and magazines on the subjects of art and fashion. She is currently the Editor of VAULT. In November 2013 a book she co-authored with Mitchell Oakley-Smith entitled *Art and Fashion in the Twentieth Century* was published by Thames and Hudson UK, and has subsequently been translated into German and Japanese.

Book Here

MEMBERSHIP



Have you considered joining The David Roche Foundation House Museum membership?

By joining, you will be able to enjoy a variety of fantastic benefits, including:

- access to exclusive tours and special events
- a 25% discount on house tours and exhibition entry fees
- 10% off lecture tickets
- 10% off shop purchases
- and so much more!

In addition, you will be supporting TDRF to continue presenting world-class exhibitions, lectures with expert guest speakers from across the country and acquiring important pieces to add to the Collection.

Sign up to TDRF membership today, so you can be part of one of Australia's finest art institutions!

For more information about the membership or to sign up, click the button below to visit the Membership page on our website or contact memberships@rochefoundation.org.au.

Find out more

ONLINE SHOP



Don't forget MOTHER'S DAY is just around the corner, and if you're wondering what to get your mum to make her special day particularly memorable, look no further. The David Roche Foundation House Museum has a fine selection of fantastic items on sale to suit every mother: silk scarves, notebooks, mugs, pens, tea towels and tote bags.

Order online at <https://www.rochefoundation.com.au/shop/> or by calling us on **(08) 8267 3677** or emailing us at info@rochefoundation.org.au (with your contact details). Click and collect is also available.

Order today before it's too late!

Visit the shop

COLLECTION

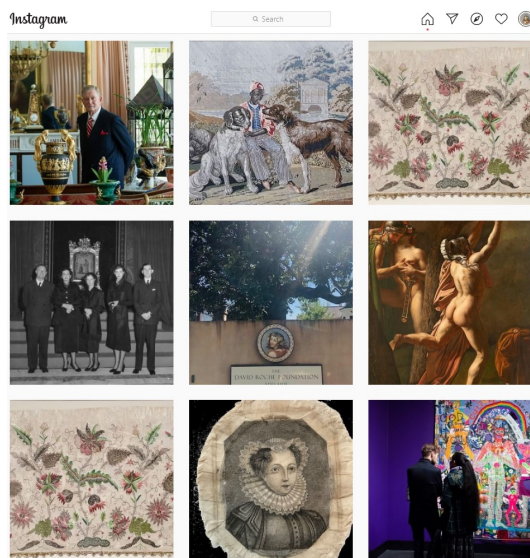


Did you know that many of the items in
The David Roche Collection are available to view online?

*Search by title, artist, type, materials, and place made to find
out more about your favourite piece or discover something new.*

Search the Collection

SOCIAL MEDIA



We are on Facebook and
Instagram

We provide regular content
through our social media
channels. Follow us now to keep
in the loop.

LINKS WE LOVE

Willi Smith: Street Couture at the Cooper Hewitt Design Museum, New York, surveyed Smith's path-breaking imagination as the most commercially successful Black American designer of the 20th century and a pioneer of "street couture"—fashion inspired by the creativity of people from the cities to the suburbs that captured the egalitarian spirit of the age. Learn more at <https://www.cooperhewitt.org/channel/willi-smith-street-couture/>

QUEER: Stories from the NGV Collection (Melbourne) includes approximately 400 artworks from antiquity to the present day, making the exhibition the most historically expansive thematic presentation of its kind ever presented by an Australian art institution. On until 21 August 2022. For further information: <https://www.ngv.vic.gov.au/exhibition/queer/>.

Silhouettes

Fashion

in the shadow of HIV/AIDS
29 Jan – 18 June 2022



THE DAVID ROCHE FOUNDATION
ADELAIDE
House Museum

Presented in
partnership with:



SAMESH
A PARTNERSHIP BETWEEN SHINE SA & THORNE HARBOUR HEALTH



The David Roche Foundation
House Museum
241 Melbourne Street
North Adelaide 5006

T: [+61 8 8267 3677](tel:+61882673677)

E: info@rochefoundation.org.au

W: www.rochefoundation.com.au

TDRF acknowledges the Kaurna people as the traditional owners of the Adelaide region. We recognise and respect Kaurna heritage, beliefs and spiritual relationship with Country, and we pay our respect to Elders past, present and emerging.



This email was sent to <<Email Address>>

[why did I get this?](#) [unsubscribe from this list](#) [update subscription preferences](#)

The David Roche Foundation · 241 Melbourne Street · North Adelaide · Adelaide, SA 5006 · Australia