

The David Roche Foundation House Museum



Michael Zavros (Australia born 1974), *The Phoenix*, 2016, Brisbane, oil on canvas, 220.0 x 200.0 cm. James & Diana Ramsay Fund supported by Philip Bacon AM through the Art Gallery of South Australia Foundation 2016, Art Gallery of South Australia, Adelaide, Courtesy the artist and Philip Bacon Galleries, Brisbane. 20162P21

Flowers: Passion. Pain. Nation.

NOW OPEN until 22 August

View the exhibition Tuesday - Saturday 10am-4pm

TDRF: Club Fermoy #8

Dear friends and supporters,

Although we find ourselves in challenging and constantly changing times, it has been heartening to see visitors enjoying the *Flowers* exhibition and David Roche's home in the last few weeks. I encourage those who can visit to see the exhibition before it closes on 22 August, as we were fortunate to borrow some superb paintings and photographs from Carrick Hill, The Cedars, the Art Gallery of South Australia and private lenders. It's a rare chance to see Bartolomeo Passerotti's life-size *Coronation of the Virgin* altarpiece, c.1580, through to Michael Zavros's stunning *The Phoenix*, 2016, and everything in between.

In this edition one of our guides explores the beauty of Joseph Blerzy's *Snuff box*, 1775/6, one of many exquisite continental boxes acquired by David Roche, and you can learn about his little-known foray into fashion in the 1960s. More details about his shop *The Cock's Feathers* can be found in TDRF's guidebook. And of course we take a look at David's favourite breed of dog, the Kerry Blue Terrier, for which he was internationally acclaimed.

Please enjoy the new video of Martyn Cook's bequest and it is fantastic to see that since we launched our introductory collection video online (<https://www.rochefoundation.com.au/multimedia/>), it has been viewed over 5000 times. Thank you! Finally, don't forget the *Musée Extérieur*, a curated art trail in North Adelaide developed by the City of Adelaide in conjunction with the Thomas Henry Museum in Cherbourg-en-Cotentin, France, which runs throughout August. See *Links We Love* for details.

Everyone stay safe and well, particularly our TDRF friends and supporters in Victoria.

Best wishes,

Robert Reason
Museum Director



As announced in the sixth edition of our newsletter, The David Roche Foundation was the beneficiary of a bequest of 29 beautiful pieces of fine and decorative arts by our inaugural Museum Director, Martyn Cook. Please enjoy this short preview of some of the items that have entered the Collection through this Bequest. Over the coming editions, we will be including a section examining each of these items in greater detail.

TODAY'S TREASURE

Showcasing the favourite pieces of our fantastic guides in The David Roche Collection. This edition with Sandra W. looks at a gorgeous Louis XVI period gold and enamel snuff box with a fine portrait miniature of a French nobleman.



Joseph-Etienne Blerzy (France active 1768-1806), Jean Petitot (France 1607-1691), enamel miniaturist, Snuff box (with miniature portrait), 1775-6, gold, enamel, 4.0 x 9.0 x 4.5cm

Our Favourite Pieces

This tiny snuff box was made in Paris in 1775/6. It has three makers: Joseph Blerzy (France working 1768-1806), one of the leading goldsmiths of the period. He was regarded as a master of fashion for making exquisite gold boxes and *étuis* for the French, Swedish and Russian royal families; *Jean Petitot* (France 1607-1691), the most important miniaturist painting royal portraits for *bôîtes à portrait* for the Sun King (Louis XIV of France), and the Swedish royal family, and Jean-Baptiste Fouache, a gold engraver active in Paris from 1774-1780.

This oblong snuff box features translucent crimson enamelling on a coin *guilloché* (engine-turned) ground on the cover, side and base within narrow, fluted gold and broad opaque

white enamelled borders. The oval enamel plaque in the centre of the cover bears the portrait of a young aristocratic gentleman. He faces to the left as he looks at us and he wears a long, curly, brown wig, and a moss green gown with blue silk lining and gold lacings. The miniature sits within a dotted gold mount and matted gold band chased with stylised laurel and surmounted by a ribbon cresting. Four rectangular side wall pilasters are adorned with chased gold laurel hung from studs and the matted gold borders are chased with stylised acanthus.

There are a number of interesting stylistic features of this piece such as the use of two types of gold to enhance visual interest. It also has a tiny, precise integral hinge with a curved cover, known as a *charnière* (butt-hinge), which is typical of French boxes. The dominant decoration featured here is the translucent red enamel defined by a machine engraved line creating an effect similar to watered silk. Brilliant opaque white enamel is applied within the ornate gold borders around the portrait, the edge of the lid and each panel on the sides.

The enamelled portrait of the young man was painted almost one hundred years before the box was made. This gentleman is dressed in the fashion of the late 17th century as we can tell from his wig and white, lace cravat or *lavallière*, made popular by the fashionable Duc de Lavallière. This particular portrait may well have been on an earlier portrait box.

The exquisite delicacy and elegance of French snuff boxes such as these has never been surpassed.

**Sandra W.
Guide
August 2020**



[View in the online collection](#)



David with Fermoy Liffey being presented with Best in Show at the Royal Adelaide Agricultural Society Show, Royal Adelaide Showgrounds, 1987

CANINE TIDBITS

Did you know...

David Roche was a renowned breeder and exhibitor of Kerry Blue Terriers, having acquired his first pair from the UK in the early 1950s. Over the years, he had a number of Kerries close to his heart, but one of his particular favourites was undoubtedly Fermoy Liffey, one of his champions in the 1980s.

Liffey was named after the River Liffey in Ireland, and it was both his show name and his call name. He was titled at a very young age, and was a multiple Best in Show winner, including at the Royal Adelaide Show. David often noted what a pleasure it was to show Liffey, commenting that he was a superior show dog, who was feisty, but full of Irish charm.

David's great fondness for Liffey was demonstrated when he provided Liffey with a companion for his twilight years at Fermoy in the form of Rufus, a Griffon whom David had inherited from his mother, Dorinda. In spite of their contrasting natures, the two were said to have got along exceptionally well.



*A gilt embossed leather box, wrapping paper, and cashmere cardigan by Alan Paine
from The Cock's Feathers*

FROM THE ARCHIVES

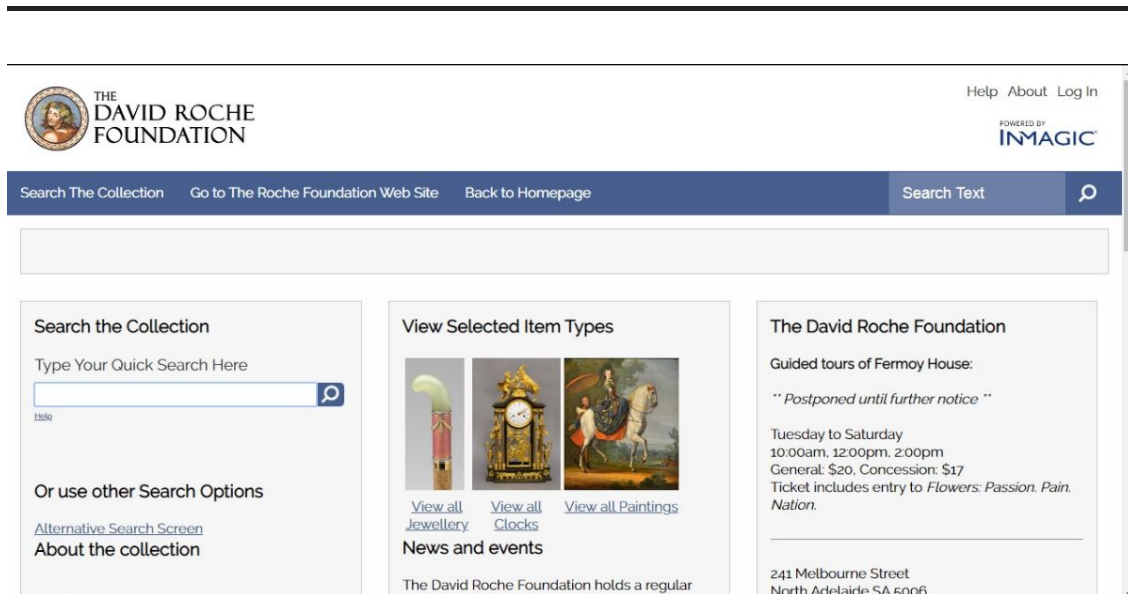
Primarily remembered for his Foundation and art collection as well as his dog exhibiting and judging, less well known about David Roche is that for a time, he had another career - that of shop owner. From the mid-1960s until about 1970, David ran a small menswear shop in the Gawler Chambers (owned by the Roche family's Adelaide Development Company), which was accessed via a laneway off Gawler Place, named *The Cock's Feathers*.

The Cock's Feathers sold the finest menswear: fashionable shirts, shorts and ties manufactured locally in Adelaide, and imported luxury clothing by English makers DAKS, Aquascutum of London and Burberry, with shoes from Italy. Some of the clothing sold from the store was emblazoned with a *Cock's Feather* label, and his shirts featured *The Cock's Feathers* pheasant logo on the front.

The clientele of *The Cock's Feathers* included a number of local notables, including the late Premier of South Australia, Don Dunstan, who remained a regular patron of *The Cock's Feathers* until its closure.

The above image shows a couple of pieces of merchandise from *The Cock's Feathers* - still in fine condition! On the left is an Italian made gilt embossed leather box, and in the centre, a fine 100% cashmere cardigan by Alan Paine of England; the latter recently donated to the Foundation by a kind former employee of David's at *The Cock's Feathers*. Also in the image, on the right, is a piece of the wrapping paper used at *The Cock's Feathers* with the repeating pheasant logo.

If you have a *Cock's Feathers* item let us know!



DIGITAL COLLECTION

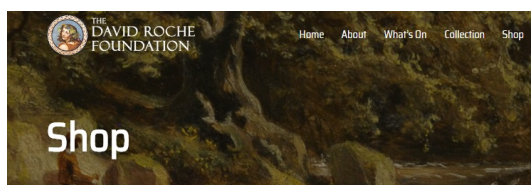
Did you know that many of the items in The David Roche Collection are available online? Find your favourite piece or discover something new. Click the Search button below.

[Search the collection](#)

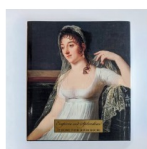
SHOP

The David Roche Foundation shop is online. We are open for business with all 40+ items ready to be ordered. From books to mouse pads to pens, we've got something for everyone, and we can ship to anywhere in Australia.

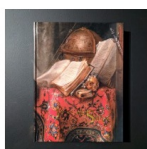
Today we are featuring our lovely Derby-inspired stylised floral scarf. Based on one of the fine porcelain vases in the Collection by the famed Derby Porcelain Factory and made from 100% silk, this scarf is the perfect accessory to add that little splash of colour to your outfit or to send as a lovely gift for someone special.



Showing 1-16 of 44 results



Book: Empires & Splendour: At Home with David Roche
\$98.00



Book: Treasure Ships exhibition catalogue
\$60.00



Book: Blooms and Brushstrokes
\$55.00



[Visit the shop](#)

Buy the Derby floral scarf



FOLLOW TDRF

We are on Facebook and Instagram! We provide regular content through our social media channels. Follow us now to keep in the loop!



Facebook



Instagram

LINKS WE LOVE

Of special significance to us at TDRF is an upcoming sale at Sydney's Shapiro Auctions on 9 August, which features around 180 pieces of art from the estate of our inaugural Museum Director, Martyn Cook. The auction is a reflection of Martyn's antique tastes with French and British neoclassical sideboards, tables and chairs, a series of beautiful chandeliers, and Japanese lacquerware and porcelain among the featured pieces.

<https://www.shapiro.com.au/catalogue/sh183-property-from-the-estate-of-martyn-cook/?filter=1>

From 14 July to 14 September, the streets of North Adelaide are hosting an exhibition of full-size reproductions of works from the Thomas Henry Museum in Cherbourg-en-Cotentin, France. Starting with Portrait of a Woman by Thomas Henry at the Women's & Children's Hospital on King William Street, the art trail then winds its way around Melbourne Street, Lefevre Terrace, Tynte Street, and includes a stop on the front wall of The David Roche Foundation House Museum.

A perfect way to enjoy a sunny day!

<https://explore.cityofadelaide.com.au/blog/musee-exterieur-outdoor-museum/>

**The David Roche Foundation
House Museum
241 Melbourne Street
North Adelaide 5006**



T: [+61 8 8267 3677](tel:+61882673677)

E: info@rochefoundation.org.au

W: www.rochefoundation.com.au



This email was sent to <<Email Address>>

[why did I get this?](#) [unsubscribe from this list](#) [update subscription preferences](#)

The David Roche Foundation · 241 Melbourne Street · North Adelaide · Adelaide, SA 5006 · Australia